

## **Biomate Pre-Stained Protein Marker (9-180 kDa)**

**Cat. No.:** BR0671

**COMPONENTS:** 250µl x 2

**Loading Volume: 5µl/Lane**

Approximately 0.1~0.4 mg/ml of each protein in buffer (20 mM Tris-phosphate pH 7.5 at 25°C), 2% SDS, 0.2 mM Dithiothreitol, 3.6 M Urea, and 15% Glycerol.

### **DESCRIPTION:**

The **Biomate Pre-stained Protein Marker (9-180 kDa)** is a ready to use three-color protein standard with 10 pre-stained proteins covering a wide range of molecular weights from 10 to 180 kDa (9 to 170 kDa in Bis-Tris (MOPS) buffer and 10 to 170 kDa in Bis-Tris (MES) buffer). Proteins are covalently coupled with a blue chromophore except for two reference bands (one green and one red band at 25 kDa and 75 kDa respectively) when separated on SDS-PAGE (Tris-Glycine buffer).


The Biomate Pre-stained Protein Marker is designed for monitoring protein separation during SDS-polyacrylamide gel electro-phoresis, verification of Western transfer efficiency on membranes, (PVDF, nylon, or nitrocellulose) and for approximating the size of proteins.

The marker is supplied in gel loading buffer and is ready to use. **Do NOT heat, dilute, or add reducing agents before loading.**

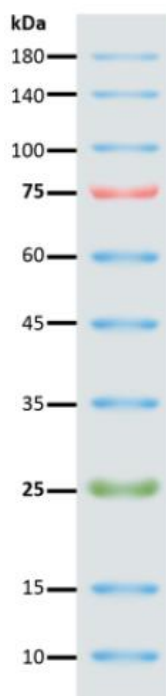
### **Loading Volume:**

- 3 µl or 5 µl per loading for clear visualization during electrophoresis on 15-well or 10-well mini-gel, respectively.
- 1.5~2.5 µl per well for general Western transferring.
- Apply more for thicker (> 1.5 mm) or larger gel.

## Guide for Molecular Weight Estimation (kDa) Migration patterns:

Band	Color	TRIS-GLYCINE	BIS-TRIS (MOPS)	BIS-TRIS (MES)	
1	Blue	180	170	170	
2	Blue	140	130	130	
3	Blue	100	93	93	
4	Red	75	70	72	
5	Blue	60	53	53	
6	Blue	45	41	42	
7	Blue	35	30	30	
8	Green	25	22	23	
9	Blue	15	14	14	
10	Blue	10	9	10	

### Biomate Pre-Stained Protein Marker (9-180 kDa)



### **STORAGE:**

Store at 4°C ≥ 3 months, -20°C ≥ 24 months  
Avoid multiple freeze-thaw cycles  
*For Research Using Only.*